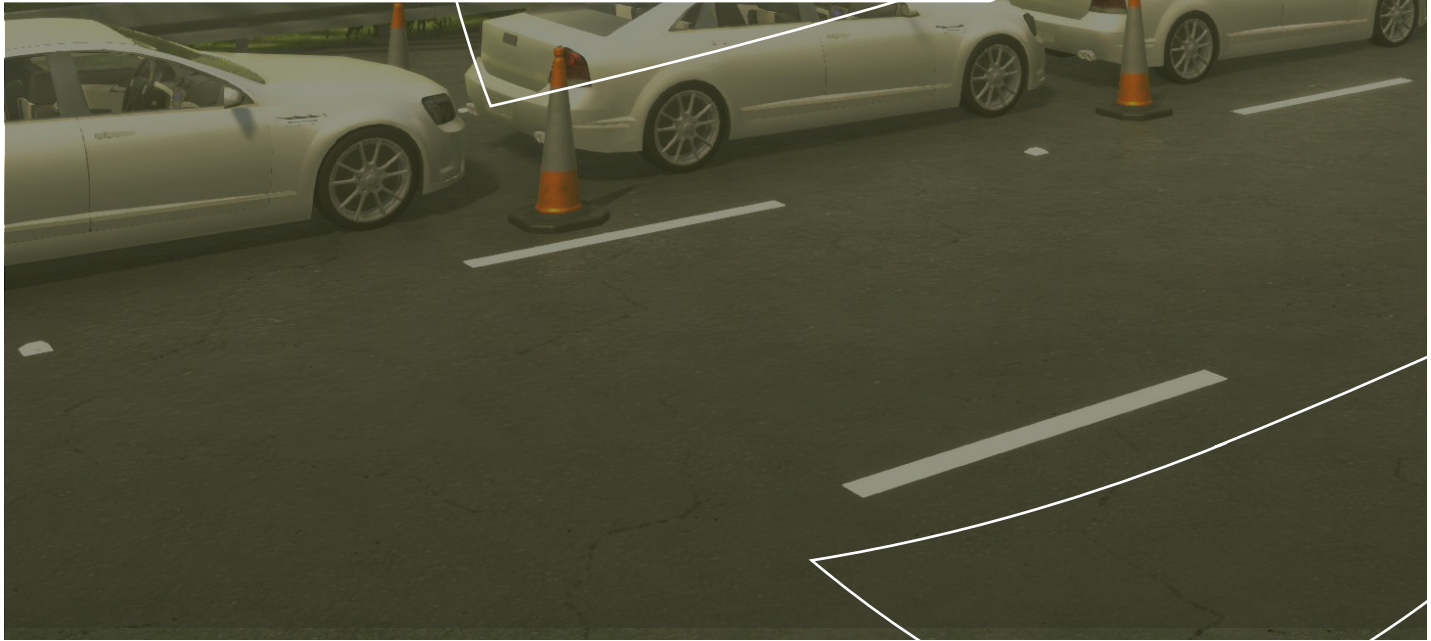




# Online Training

## Applied Driving

Over 40+ Interactive E-learning Modules and Safety Videos to help support your team.





# Blended Learning

## Online Training Modules

Our modules are purposefully designed to tackle driver behavior by creating a supportive, skill-enhancing environment. They are short and engaging, using the latest research to stimulate learning. The modules boast interactive elements that encourage drivers to see the real-life practicality of the knowledge being shared.

In 2023, Applied Driving will be expanding development of VR training modules. By incorporating new technologies like VR into driver education, learning retention is significantly increased. The immerse experience of VR allows learners to fully engage themselves in the driving experience, providing real-life application that strengthens the learning. Any modules currently available in VR are indicated in the module list.

Training can be made available in multiple languages and either left- or right-hand drive where necessary. Training can also be made either compulsory or optional for drivers to complete. They can also be released periodically over a set length of time to regularly reinforce safety messages. All training is available on multiple devices, including PC, laptop and tablets.

### SINGLE MODULES

The majority of training needs are met through the use of online modules. Drivers can be assigned compulsory modules to complete, either company-wide or group-specific, as part of the permit to drive process. Additionally, modules can be triggered automatically based on the outcomes of the risk assessment.

### BUILDING CLIENT-SPECIFIC MODULES

By working closely with our module development team, clients have the unique opportunity to build their own modules. Client-specific modules could tackle known driver risk scenarios, sites or environments and can be designed for online learning, virtual reality or simulator experiences.

*We welcome clients to extend the use of any purchased training modules and share the license with friends and family, enabling*



## Overview & Hazard Perception

*unlimited use for an agreed period of time.*

### HAZARD PERCEPTION BUNDLE

This pack of six modules reminds drivers of the importance of looking for potential hazards when driving. Drivers are encouraged to enhance their observational skills through learning of both the obvious and hidden hazards on the road.

The bundle can be automatically assigned to drivers in response to the risk assessment outcomes and modules are issued periodically over a set length of time.

#### Multi-Lane

This module looks at the obvious and hidden hazards of driving on multi-lane roads. You will remember the importance of maintaining your bubble of safety at all times to keep you and your vehicle safe.

#### Urban

This module looks at the obvious and hidden hazards of driving in urban environments. Through interactive elements you will discover the importance of continuous observations.

#### Rural

This module looks at the obvious and hidden hazards of driving on rural roads. Informative videos will highlight the potential risk you face and remind you of the key skills to keep you safe.

#### Vulnerable Road Users

This module reviews the dangers that vulnerable road users face. You will be refreshed on how keeping your bubble of safety and constant observations can keep you and other road users safe.

#### Speed Awareness

This module reviews the considerable impact that speed has on vehicle stability and stopping distances. It will highlight the importance of concentration and observation to maintain a safe speed.

#### Avoiding Distractions

This module outlines the different types of distractions and demonstrates the impact that distraction has on driving. Refreshing your knowledge, you will remember how to keep the distractions at bay.



# Blended Learning

## Module List

### Standard Modules: Average Length 6 - 8 minutes

#### Mirrors, Blind Spots & Large Vehicles | VR Compatible

This module looks at the mirrors and blind spots of vehicles, particularly those of large vehicles. You will know how these blind spots affect other road users and how thorough observations can keep you and others safe on the road.

#### Mirrors, Observations and Blindspots | VR Compatible

This module looks at the mirrors and blind spots of each main vehicle type and how they affect other vehicles on the road. You will be aware of what actions you can take to ensure safety in the common scenarios demonstrated.

#### Vehicle Technology, Mirrors and Observations | VR Compatible

This module highlights the importance of setting up mirrors correctly and the dangers blind spots pose, particularly when vehicle technology is being used. You will be aware of the danger in over relying on technology.

#### Physical Distractions

This module highlights the risk associated with physical distractions when driving using interactive elements to test your reaction times. Your understanding of physical distractions and why they are so dangerous will be refreshed.

#### Cognitive Distractions

This module demonstrates through interactive activities how limited we are in processing and remembering different information and the negative consequences cognitive distractions have on your ability to drive safely.

#### Emotional Distractions

This module looks at the ways heightened emotions can negatively affect your driving and increase your chance of risk-taking behavior. It will teach you ways to control your emotions so that potentially dangerous situations are avoided.

#### Parking - Collision Avoidance | VR Compatible

This module challenges prevailing parking assumptions and reviews ways to keep you and your vehicle safe. Interactive elements demonstrate regular parking mistakes and reinforces actions you can take to prevent it happening to you.

#### Personal Safety - Journey Planning

This module will help you plan your journeys to maximize your safety and security. You will understand the associated risks with long journeys, time of day, method of transport and the importance of forward planning.



## Module List

### Aggressive Driving

This module addresses the behaviors that contribute towards aggressive driving. Interactive elements will show you how to respond safely to other aggressive drivers and how to monitor your own behavior for aggressive tendencies.

### Fuel-efficient Driving

This module outlines the key techniques for eco-driving. You'll be reminded of the tips and tricks to drive efficiently through managing your speed, acceleration and braking.

### Speed Awareness

This module reviews the considerable impact that speed has on vehicle stability and stopping distances. It will highlight the importance of concentration and observation to maintain a safe speed.

### Driver Fatigue

This module looks at the risks of driving while tired. It highlights the at-risk areas, including total journey time and the affect of the time of day on your ability to drive safely.

### Avoiding Rear End Collisions

This module will demonstrate the key techniques to avoid one of the most common types of collision. You will be reminded of how the bubble of safety can help you prevent an incident from ever occurring.

### Pre-Drive Checks

This module uses interactive elements to showcase the essential pre-drive checks you must carry out before your journey. It covers what parts of the vehicle you should check and the risks if you don't.

### Fitness to Drive

This modules refreshes your knowledge of how to measure your fitness to drive. It will challenge myths and look at the affect of alcohol and medication on your ability to drive safely.

### Breakdown and Collision Management | UK Only

This module looks at the safe action you should take following a vehicle breakdown or collision. It will refresh your knowledge on how to avoid additional harm to your person if left vulnerable by the road.

### Vulnerable Road Users

This module reviews the dangers that vulnerable road users face. You will be refreshed on how keeping your bubble of safety and constant observations can keep you and other road users safe.



# Blended Learning

## EV Characteristics

This module covers the key characteristics to an electric vehicle including acceleration and regen braking. You will understand how kinetic energy is recycled to fuel your vehicle's journey.

## EV Charging

This module looks at all aspects of electric vehicle charging, including charging times, costs, and how to find locations with charging points. You will also learn some of the essential tips on how to keep your charging cables safe from damage.

## EV Journey Planning

This module provides the core considerations any driver should think about when planning a journey with an electric vehicle. It is important to be prepared, and covered in all eventualities when on the road.

## EV Maintenance

This module educates drivers on how to look after their electric vehicle effectively, and covers the regular maintenance services or checks that they require, to keep the vehicle in good condition.

## Reverse Parking

This module will highlight the benefits and importance of reverse parking. You will understand how your visibility and overall safety is improved by using this method when parking your vehicle.

## Micro Modules: Average Length 3 - 5 minutes

These modules are purposefully designed to provide educational and supportive interventions for typical at risk behaviours identified through Telematics.

### Harsh Braking

This module teaches the foundations of space management and the importance of maintaining the bubble of safety around your vehicle. You will understand how hard braking increases your risk of rear-end collisions.

### Distracted Driving - Reaction Times

This interactive module has you taking command of a vehicle, putting your reaction times to the test. The tasks you're given demonstrate the risks you are exposed to when driving distracted and the potentially devastating consequences.



### Distracted Driving - Consequences

This module looks at the distracted driving impacts that last a lifetime by reinforcing why it is critical to avoid distractions while driving. You will learn the main distractions and how to ignore them to stay focused and safe when driving.

### Harsh Acceleration - Stability

This module shows you the impact rapid acceleration has on your vehicle and your passengers. It will teach you the effect of forces on your vehicle and the danger and discomfort that rapid acceleration has on you and others.

### Harsh Acceleration - Consequences

This module shows you the unexpected impact that rapid acceleration has on your vehicle and how easy it is to lose control. You will understand the potentially deadly consequences the aggressive driving style can have.

### Driving at Speed - Stopping Distances

This module demonstrates the substantial effect increased speed has on your stopping distances. It will translate speed to kinetic energy to help you understand the danger of speed to you and others.

### Driving at Speed - Consequences

This module will teach you the big impact a small increase in speed can have. It will help you understand the dangerous risks exposed to you and others when driving at speed and the potentially catastrophic consequences.

### Long Journey 1

This module covers how drivers should be prepared for long journeys. You will learn when to avoid driving, for the safety and wellbeing of yourself and other road users.

### Long Journey 2

This module describes the risks and dangers of long journeys when not taking regular breaks. Learn how to stay alert and focused for a safe journey.

### Fuel Efficient Driving 1

This module provides information on how fuel efficient driving can benefit you and your vehicle on journeys. Discover how to adapt some of the techniques to lower your vehicles fuel consumption, emissions, and costs.

### Fuel Efficient Driving 2

This module teaches how speed variation can effect your fuel consumption, and where to be mindful of using acceleration in particular road terrains to be fuel efficient.



## Safety Videos: Average Length 2 - 6 minutes

Short videos, often used in a toolbox talk format to raise awareness.

### Harsh Cornering

This safety video will educate you on the dangers of harsh cornering. Learn how it could impact you losing control of your vehicles stability, and potentially lead to a fatal incident.

### Speed Awareness

This safety video shows the dangers of speeding and the consequences when not sticking to the speed limits. Learn how to become more aware, and utilize your vehicles settings for safe driving.

### Rapid Acceleration

This safety video explains how rapid acceleration creates a greater risk of collision and how to prevent it, keeping you and other road users safe.

### Hard Braking

This safety video explains what hard braking is, and how the behavioral risk can be prevented when driving your vehicle.

### Distracted Driving

This safety video covers how not to become distracted when driving. You will learn the consequences of becoming distracted, and the fatal impacts it could entail.

### Alcohol and Drug Driving

This safety video covers how driving under the influence of drink or drugs can be dangerous, and can put you and other road users at serious risk.

### Long Journeys

This safety video explains how long periods of time sitting in the same position could have a significant effect on driver health. Learn when and how to take a break for a safe journey.

### Safety Bubble

This safety video educates drivers on how to create space effectively around your vehicle, to protect you, your passengers, and other road users for unpredictable situations.

### Horse Riders and The Highway Code

This safety video guides drivers on how they should approach horses when on the road, and the rules from The Highway Code that apply.





## Personal Safety: Vehicle Rental

This safety video aims to provide you with essential knowledge on ensuring safety while planning to hire and utilize a rented vehicle for work-related purposes.



# Applied Driving

25 Barnes Wallis Road, Fareham, Hampshire, PO15 5TT, UK

[www.applied-driving.com](http://www.applied-driving.com)

[info@applied-driving.com](mailto:info@applied-driving.com)

Together, we can make the roads safer.